

Getting Started with Design and Data Creation

Generate synthetic data to drive the future of your AI workloads

Real data can come with real challenges



- Unavailable or unusable
- Sensitive, invaluable, regulated
- Messy or incomplete
- Time and resource Intensive to produce

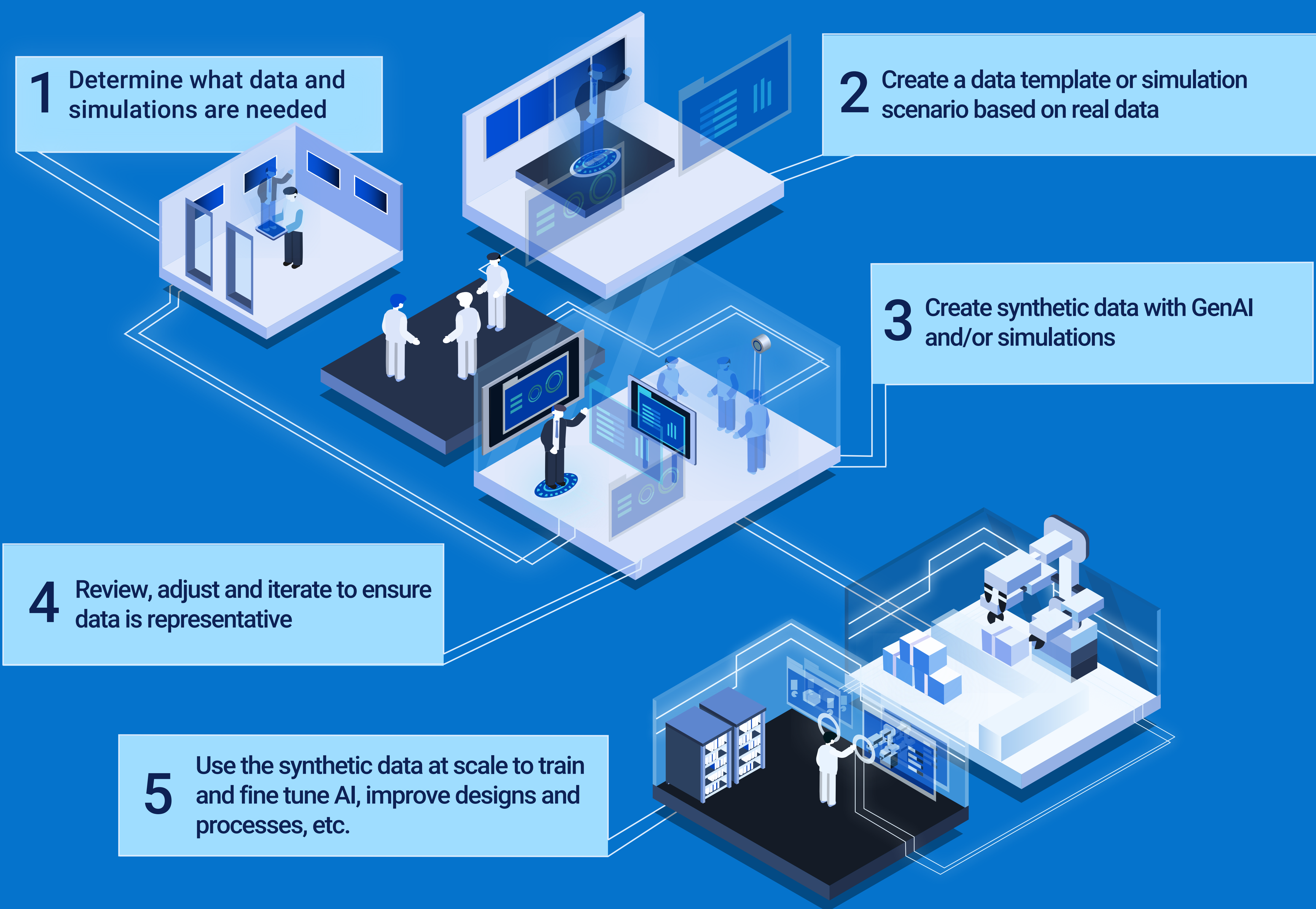
94%
of organizations anticipate facing challenges when identifying, preparing and/or using data for AI¹

Overcome data challenges with design and data creation

- Accelerate design decisions and increase efficiency
- Drive innovation as you train and test without limits
- Protect your business and reduce risk to your data

Generating synthetic data

Quality synthetic data relies on quality real data. These steps are vital to ensure your synthetic data accurately represents reality.



Synthetic data delivers value across key industries

<p>Manufacturing</p> <p>Optimize manufacturing processes and train AI/ML for predictive maintenance and QA.</p>	<p>Product design and engineering</p> <p>Accelerate early prototyping with faster iterations and test the impossible to drive innovative design.</p>
<p>Supply chain and logistics</p> <p>Simulate end-to-end supply chains to discover efficiencies and proactively prepare for potential disruptions.</p>	<p>Marketing and Business Strategy</p> <p>Create representative customer and market data to visualize campaigns, perform A/B testing and personalization.</p>
<p>Healthcare</p> <p>Improve predictive diagnostics, EHR, patient forecasting and more, all while protecting patient data</p>	

Rapidly expand datasets and test without limits.
Create synthetic data to drive efficiencies and accelerate innovation, all while **protecting your customer data and invaluable IP.**

- Learn about **acceleration services for AI**
- Explore the **Dell AI Factory**